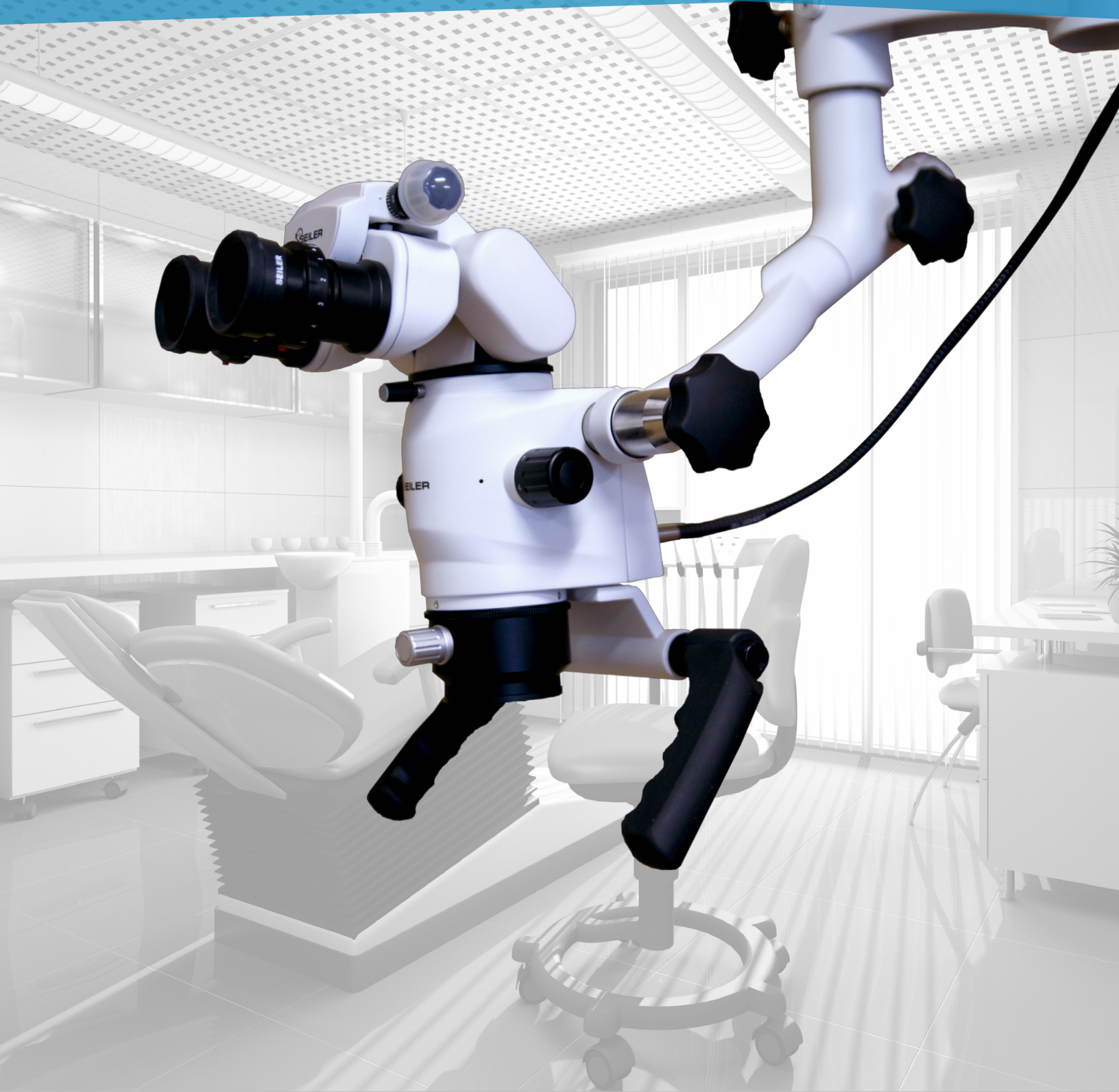




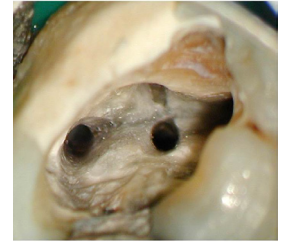
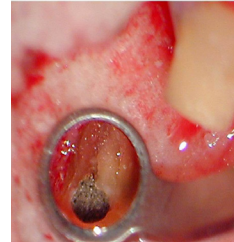
**SEILER**  
MEDICAL DIVISION



**ALPHA SLIM SERIES  
(3 & 6)**

**Dental Surgical Microscope**

Dental



## ALPHA SLIM (3 & 6) TECHNICAL SPECIFICATIONS

- Can be used with surgical drape
- 6-step turret magnification system (3 step turret available)
- LED illumination + 100,000 LUX, 50,000-hour life
- Widefield eyepieces with dioptic locks: 10x, 12.5x, 16x and 20x
- Light transported via liquid light guide
- True coaxial illumination = "shadow-free view"
- 250 mm objective lens standard (OPTIONAL: 175mm, 200mm, 300mm, 400mm)
- OPTIONAL: Vario focus lens - 200mm-350mm
- 0-220° inclinable binocular head (fixed 45° head available)
- Composite and red-free filter standard
- Available in ceiling, high wall, wall, fixed floor, table and mobile mount

### ACCESSORIES

- 50/50-50/50, 50/50-20/80 Beamsplitter
- Full 1080p and 4K HD Live Video
- All DSLR Camera Attachments
- Assistant Binocular Teaching Head
- Extender/Rotation Device
- Laser Filters
- Iris Diaphragm
- Vario Focus

