



Clearance!  
~~\$39,995~~  
**\$16,995**

# EVOLUTION ZOOM

FOCUS ON PRECISION

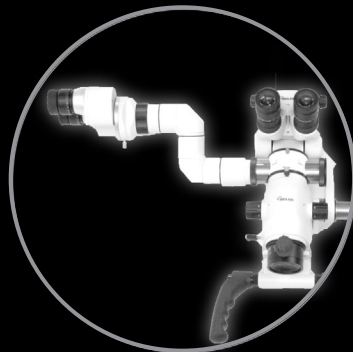




Our eyes are one of the most fragile organs in our body. When they require surgery, it is a meticulous and detailed procedure. The Seiler Evolution Zoom Microscope for Ophthalmology provides a detailed look at all areas of the eye. With advanced features such as enhanced Red Reflex, this microscope is designed to provide accurate imaging during cataract surgery, laser eye surgery, and other precision eye surgeries. This microscope also features an XY movement pedal, perfect for hands-free operating. In addition to this state-of-the-art microscope with its built-in features, Seiler offers a variety of accessories to improve any surgeon operation. Items that can be added to this microscope include a beam splitter, camera equipment, an assistant teaching head, and Xenon light. All Seiler Microscopes feature APOchromatic lenses, LED illumination, and an ergonomic sitting position for superior comfort.



X-Y System



Binocular for second observer



Video image capture system



SRI Slim Image re-inverter system for vitrectomy surgery



200° Inclinable binocular head



Hero 4 has been modified so you can take still images and capture 1080P video.



Easily attach any Sony, Canon, or Nikon DSLR camera directly to the microscope for high quality, razor sharp images.



SeilerMax Adapter for use with wide angle, non-contact lenses

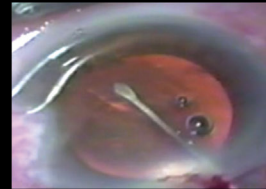
The Seiler Ophthalmology ZOOM surgical microscope incorporates an elegant design and superior optical quality, to offer excellent deep focus with a distorting-free image.



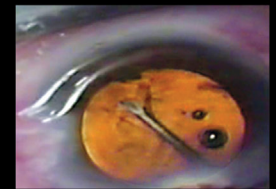
### Seiler Red Reflex

#### Highly Optimized Red Reflex System

Seiler red reflex has been developed and incorporated into the Seiler microscope to provide perfect illumination in any surgical situation, with excellent color, contrast and deep focus performance.



Without Red Reflex



With Red Reflex

#### Achromatic Optics

- Excellent contrast and image definition
- Exceptional depth of focus
- High light transmission enabling work in low lighting conditions
- Residual aberration corrections to improve image quality

#### Bright Illumination

- Bright and stable red reflex
- Large illumination field, 60mm
- Blue and red-free filters available
- Quick and precise bulb change mechanism
- LED Illumination

#### Stand

- Robust and stable
- Smooth, precise movement
- Integrated braking system

#### Advanced Electronic System

- Automatic, stabilized power source for greater security
- Microfocusing and X-Y reset system
- System Tested and certified against electronic shocks and EMI

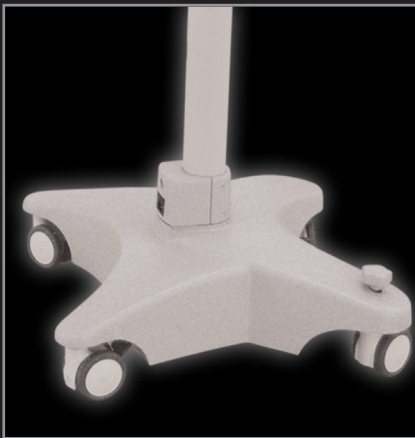
#### Total control through foot pedal

- Multi-function pedal with on/off switch and illumination intensity, microfocusing, zoom, and X-Y device controls
- Modern, ergonomic design





Electronic Control Panel



Stable floor stand with integrated wheels with blocking system and level adjustment knob



Multifunction foot pedal with on/off switch and illumination intensity, micro focus, zoom and XY device controls

## TECHNICAL SPECIFICATIONS

OPTICAL SYSTEM	APOCHROMATIC WITH ALL OPTICAL ABERRATION CORRECTION
STANDARD OBJECTIVE	250MM
MAGNIFICATIONS	MOTORIZED ZOOM 1:6
MAGNIFICATION WITH STANDAR OBJECTIVE	FROM 4X TO 23X CONTINUOUS
FILED OF OBSERVATION	FROM 8 MM TO 60 MM
OCULARS	12,5 X
OCULAR DIOPTER ADJUSTMENT	- 6D TO + 6D
STANDARD BINOCULAR	200 DEGREES (INCLINABLE)
INTERPUPILLARY DISTANCE ADJUSTMENTE	FROM 48MM UP TO 78MM
MICROFOCUS	MOTORIZED (JOYSTIC ON HANDS AND FOOD PEDAL CONTROL)
MICROFOCUS DISPLACEMENT	+/- 20MM
STADARD ILLUMINATION	LED SYSTEM UP TO 120K LUX (HALOGEN AVAILABLE)
ILLUMINATION FIELD	55MM DIAMETER
FILTERS	HEAT ABSORBING, UV ABSORBING, GREEN, BLUE BLOCKER AND HALOGEN SIMULATOR
STANDING	MOVABLE WITH PANTOGRAPHIC ARM
MAXIMUM VERTICAL SHIFT	0.6M
MAXIMUM REACH	1.2M
MAXIMUM ROTATION	570 DEGREES
BASE DIMENSIONS	840MM X 840MM WITH WHEELS AND LOCKER KNOB
FOOT PEDAL	MULTIFUNCTION WATER RESISTANT
VOLTAGE	FULL RANGE FROM 90VAC UP TO 240VAC ATUOMATICLY 50 - 60 HZ
POWER CONSUMPTION	200 VA
ACCESSORIES	TOTAL RANGE IN EACH AXIS +/- 22MM
MOTORIZED XY	OCULAR 12,5X / BINOCULAR FIXED 45o OR INCLINEBLE 200o AND 360 DEGREES OF ROTATION
SECOND OBSERVER	SLIM SYSTEM HIGH QUALITY IMAGES
IMAGE INVERTER FOR VITRCTOMY SURGERIES	HALOGEN 150W - 80K LUX AND XENON 180W - 150K LUX
OPTIONAL ILLUMINATION SYSTEM	IMAGE SPLITTER + CAMERA ADAPTER + DIGITAL CAMERA
VIDEO SYSTEM	175MM, 250MM, 300MM, 350MM AND 400MM
OTHER OBJECTIVES	